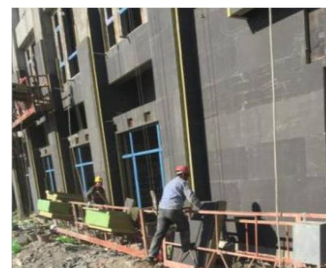
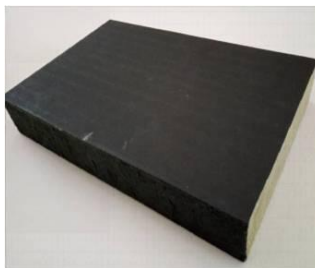
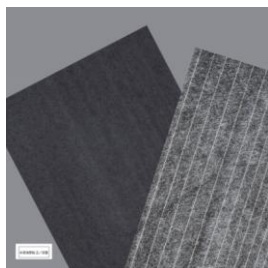
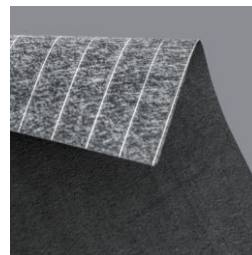


Cement coated fiberglass mat

PRODUCT DESCRIPTION

Cement coated fiberglass mat uses fiberglass mat as the base material, coated with a mixture of cement, stone powder and binder on one or both sides, then undergoes a curing process. Cement coated fiberglass mat can be grey, white, green, and more, according to the request of the customer. This kind of material is often used on the surface of wall boards, ceilings, mineral wool panels, and more. It gives good mechanical features and insulation features to wall boards and mineral wool boards.



CHARACTERISTICS

- ◆ Good fireproof performance A class
- ◆ Good waterproof performance
- ◆ Good mechanical performance

PRODUCT CODE

CCM-0.45
CCM : cement coated fiberglass mat
0.45 : thickness

TECHNICAL DATA

Product code	Unit Weight (g/m ²)	Pull strength (MPA)	MD/CD Tensile Strength (N/5cm)	Roll width (mm)	Roll length (m)	Roll diameter (mm)	Thickness (mm)
CCM-0.45	300	> 0.10	> 200/100	≤1260	900	≤750	0.45±0.1
CCM-0.9	900	> 0.15	> 350/200	≤1260	450	≤750	0.9±0.1
Testing Basis	GB/T 9914.3-2011						

Remark: 1. Color can be tailored to the demand
2. The technical data above is for reference only, can produce as per customer demand.

PACKING

1. Every roll in plastic film
2. With the width of 1000mm, each 40' container load 115 rolls without pallet;

STORAGE

This product should be stored in a dry, ventilated and rainproof place, with temperatures from 5°C to 35°C and humidity between 35% and 65%. It is recommended to be kept in intact package when not used to avoid damp.

Version #: NO.201906

Address: No. Jiangjun Ave., Nanjing, P.R. China
Tel.: +86 25 58321911
URL: www.fiberglassnonwoven.com

E-mail: sales@njefg.com
Fax: +86 25 58321442
WhatsApp: +86 18851651909